

2000nm 1x2 2x2 PM Fiber Fused Coupler

2000nm 1x2, 2x2 Polarization Maintaining (PM) Fused Coupler is built with fused biconical taper (FBT) technology, it can be used in split the optical signal power into two parts with even or various coupling ratio and keep the polarization maintaining, it's widely applied in fiber optic sensor, fiber amplifier system and fiber optic diffraction field.

Application:

Fiber Optic Amplifier
Fiber Optic Sensor
Fiber Laser
Optical Diffraction System

Features:

Low Excess Loss
Low Insertion Loss
High Extinction Ratio
High Reliability



Specification:

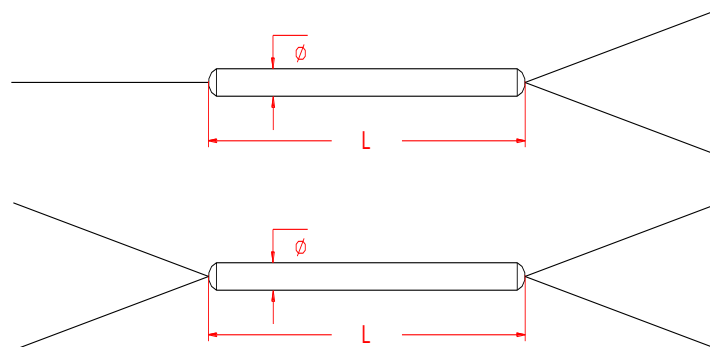
Parameter	Symbol	Value	Unit
Center Wavelength	λ	2000	nm
Bandwidth	BW	± 20	nm
Max. Excess Loss	EL	0.3	dB
Max. Insertion Loss	IL	50/50 (± 3.5)	3.6/3.6
		40/60 (± 2.5)	5.2/3.1
		30/70 (± 2.5)	5.8/2.0
		20/80 (± 2.0)	8.0/1.5
		10/90 (± 1.2)	11.6/1.2
		5/95 (± 0.8)	14.8/0.8
		3/97 (± 0.7)	17.0/0.5
		2/98 (± 0.6)	18.4/0.4
		1/99 (± 0.4)	22.0/0.35
Min. Extinction Ratio	ER	20	dB
Min. Directivity		50	dB
Min. Return Loss	RL	50	dB
Fiber Type		PM Panda Fiber	-
Max. Tensile Load		5	N
Max. Optical Power (CW)	P	2	W
Operating Temperature	T	-40~75	$^{\circ}\text{C}$
Storage Temperature	T	-40~85	$^{\circ}\text{C}$
Package Dimension		$\Phi 3.0 \times L54$	mm

Notice: Above specifications are tested at center wavelength without connector in room temperature @23 $^{\circ}\text{C}$.

For devices with connectors, IL will be 0.3dB higher, EL will be 0.2dB higher, ER will be 2dB lower, slow axis is default aligned to the connector key.

If need optical power more than 2W CW, please contact us to confirm. Connectors only 1W (Continue Wavelength) optical power guarantee.

Drawing:



Ordering Information (Part Number):**PMFUC-WWW-PP-A-RR-J-LL-CC**

WWW	PP	A	RR	J	LL	CC
Wavelength	Port	Working Axis	Coupling Ratio	Fiber Jacket	Fiber Length	Connector
1940 - 1940nm	12 - 1x2	B - Both Axes	01 - 1/99	B - 250um Bare Fiber	05 - 0.5m	NE - None
1950 - 1950nm	22 - 2x2	Working	02 - 2/98	9 - 900um Loose Tube	10 - 1.0m	FA - FC/APC
2000 - 2000nm		S - Slow Axis	03 - 3/97		15 - 1.5m	FU - FC/UPC
2050 - 2050nm		Working	05 - 5/95		20 - 2.0m	SA - SC/APC
SSSS - Specify		F - Fast Axis	10 - 10/90		SS - Specify	SU - SU/APC
		Working	20 - 20/80			LA - LC/APC
			30 - 30/70			LU - LC/UPC
			40 - 40/60			SS - Specify
			50 - 50/50			
			SS - Specify			